

Tidan's exhibition trail

Old Train Station - The river - Viewpoint gallery



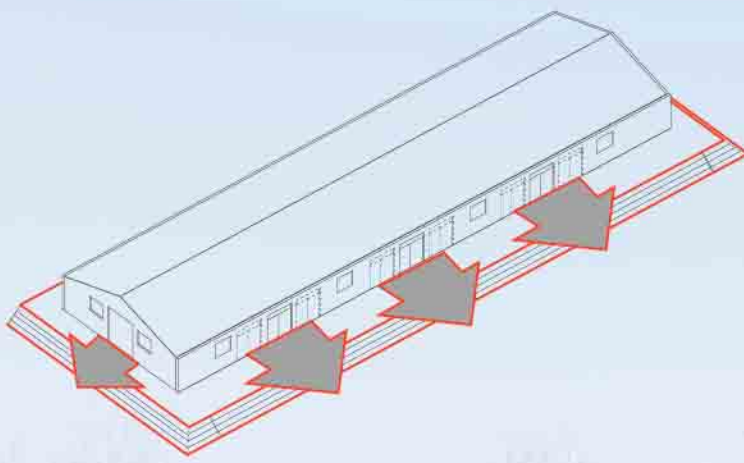
Pathwalk and attractor spots

Key spots located along the path walk and the river serve as attractors for residents and visitors. These areas function as viewpoints, connectors to the river, shelters, landmarks and, exhibitors of Tidan. Simple structures aim to attract people to walk and enjoy Tidan's landscape.



Warehouse beside the old train station

Reuse and reactivation of the building and public space are proposed. Due to its location, the building has the potential to become part of the reopening of the train station in the future. During the transitional period, the building is opened and proposed as a multifunctional space that hosts a train station exhibition, restaurant and various activities changing throughout the year such as, artistic events, traditional car and technology exhibitions, temporary commercial events, etc.



Tiny Exhibition Shelter

The architectural space is located along the border of Tidan river. It functions as an exhibition area, showcasing the old wool industry and framing the image towards Veiv Point Gallery. The tiny building also works as a shelter from wind and as a reflection of Tidan's values.

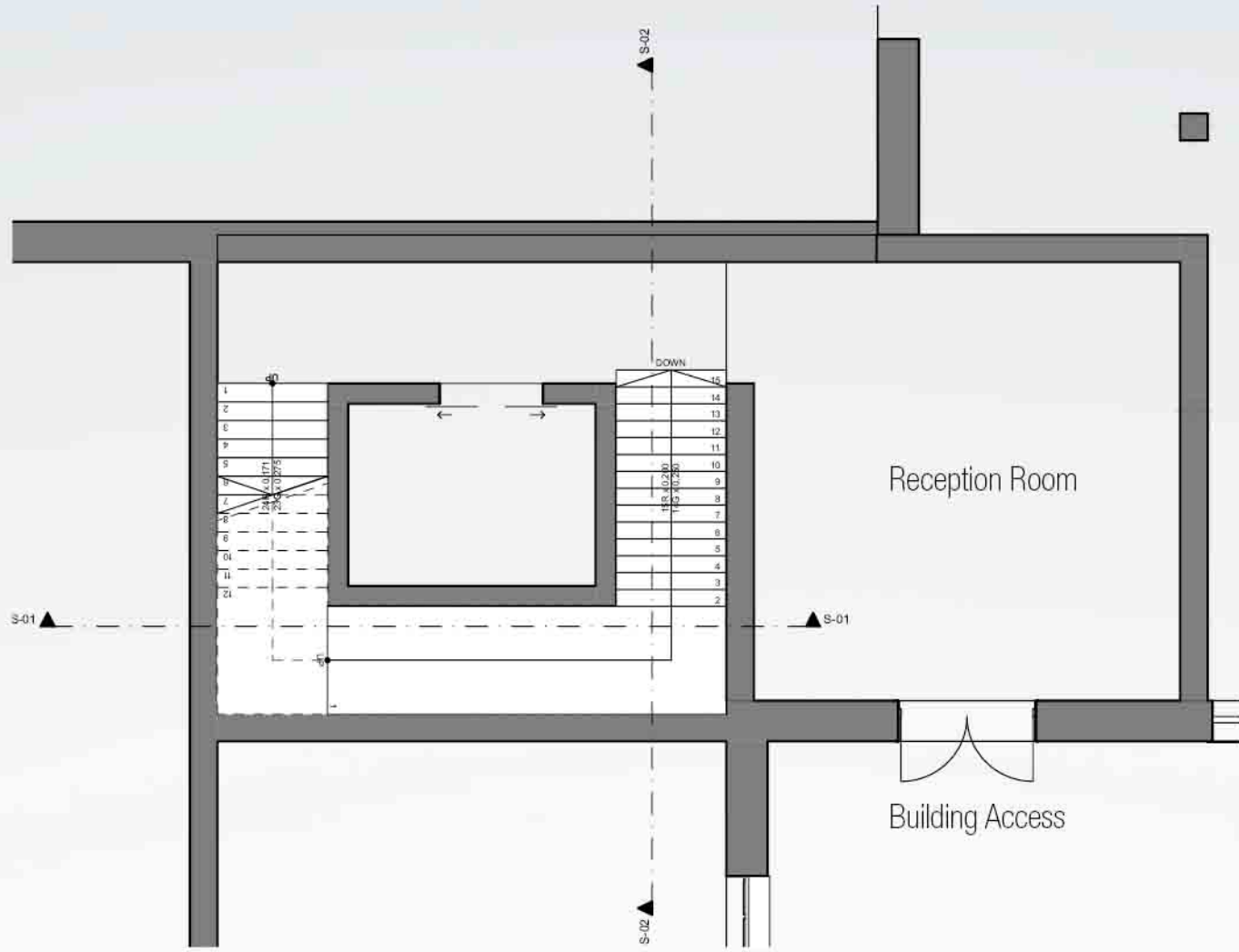
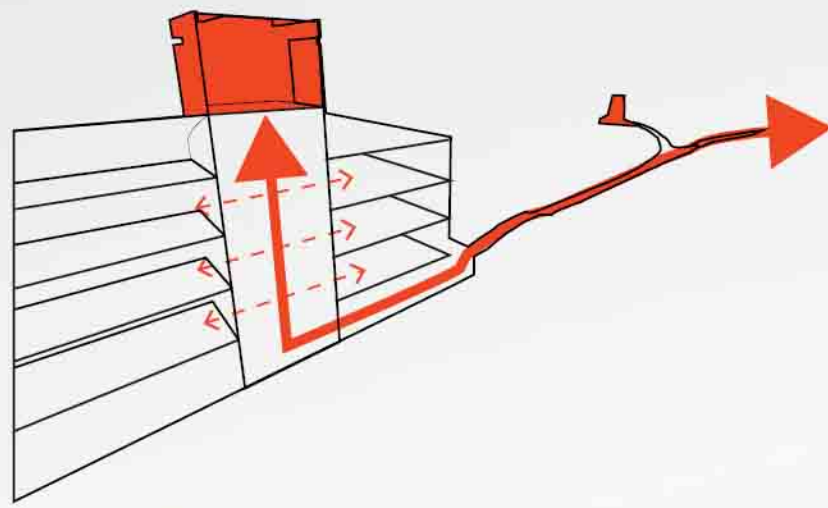


Tidan's exhibition trail

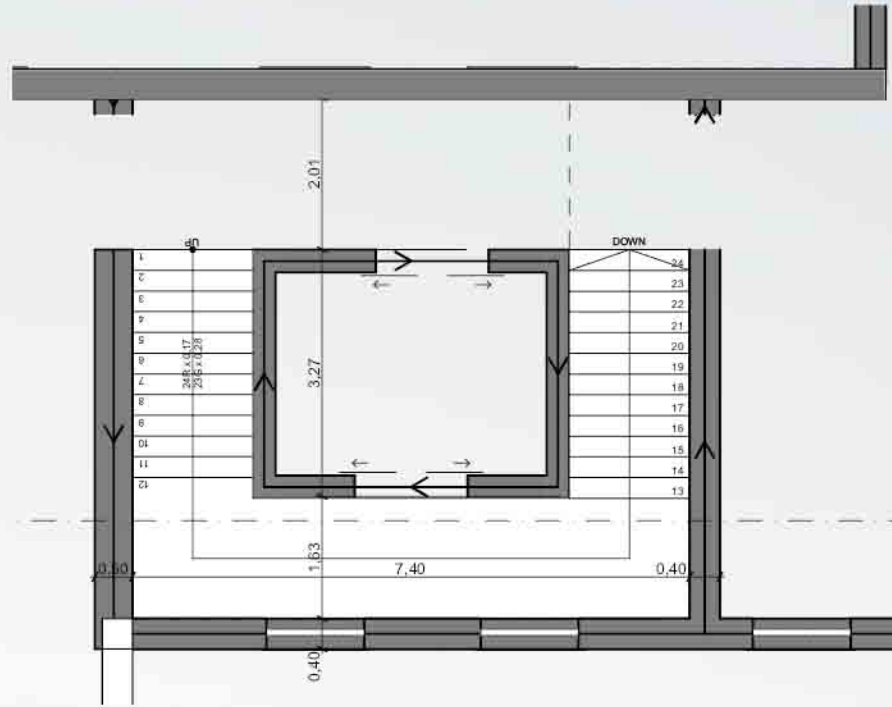
Old Train Station - The river - Viewpoint gallery

View Point Gallery

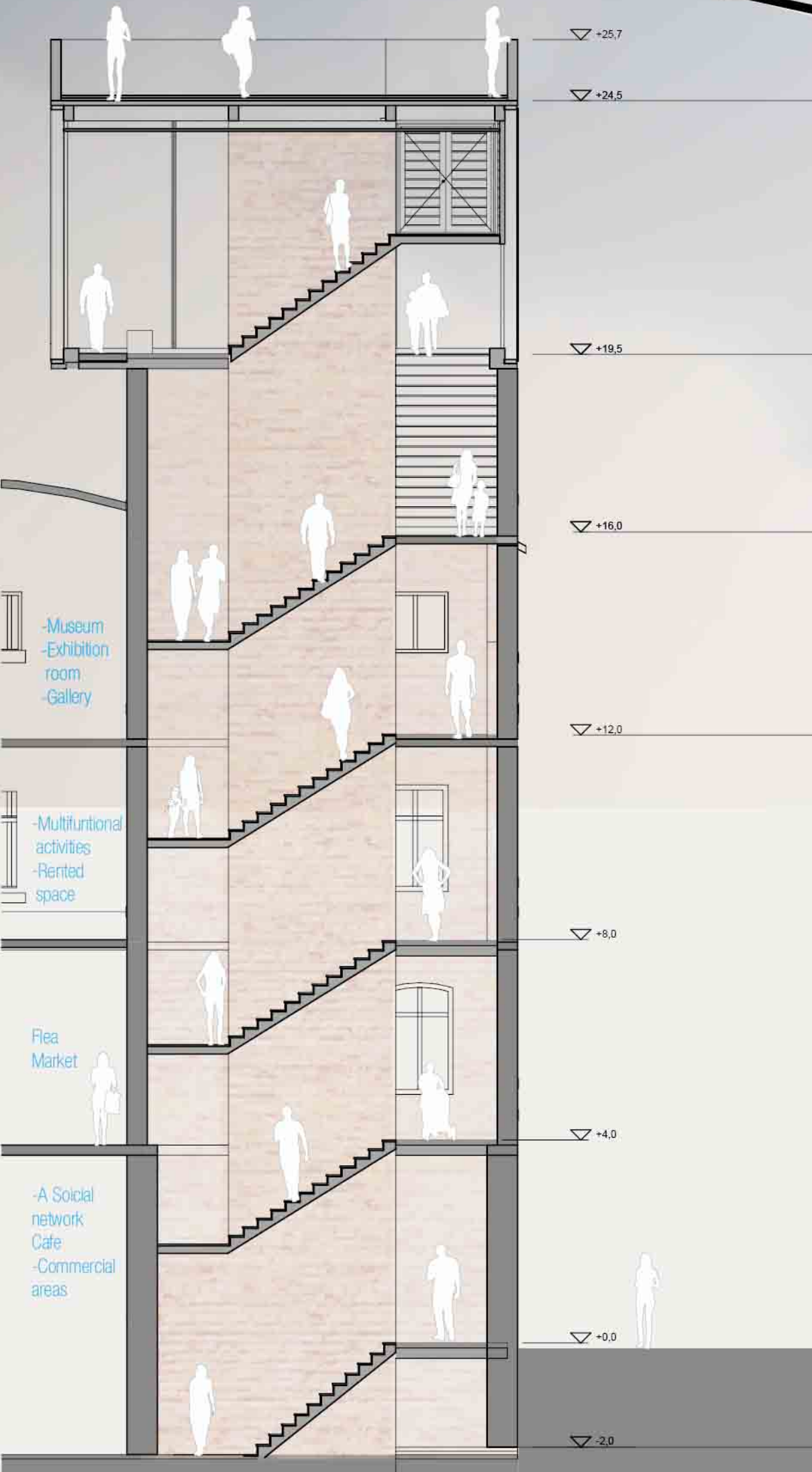
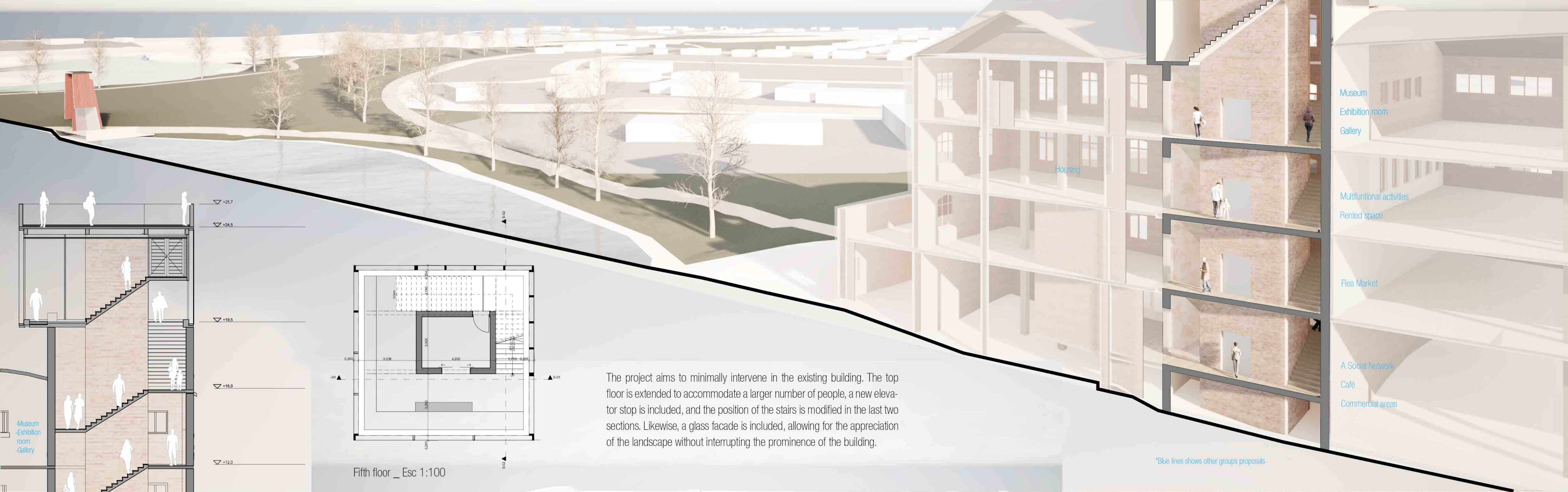
Revitalization of the wool industry building with an intervention situated on the top floor that connects the trail with interior spaces ending with a wonderful view over Tidan. The project reuses and enhances the existing staircase, integrating functions suggested by other groups, such as a museum dedicated to wool, flea market, commercial areas, and housing. The concepts of reprogramming and reusing are applied.



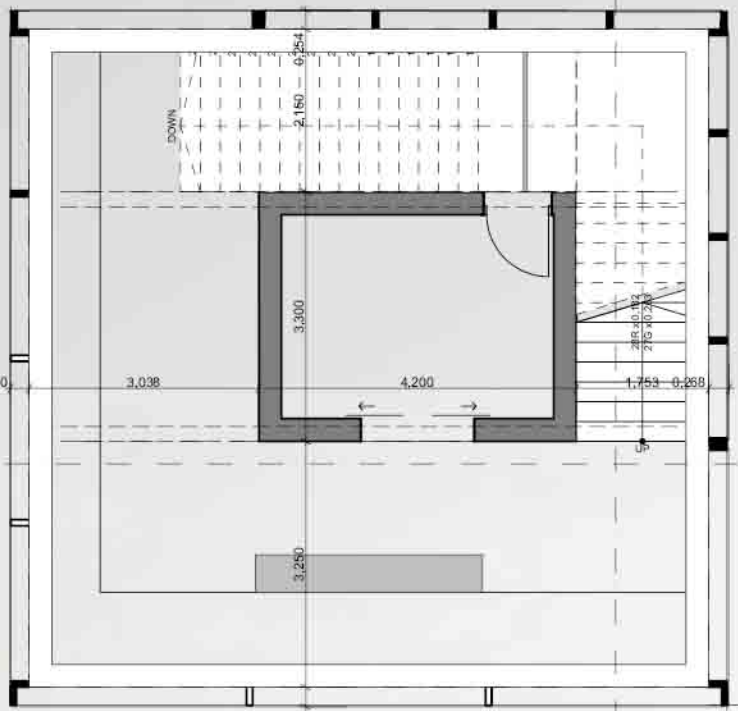
Ground floor_ Esc. 1:100



Third floor _ Esc 1:100



Section 02_ Esc. 1:100



Fifth floor _ Esc 1:100

The project aims to minimally intervene in the existing building. The top floor is extended to accommodate a larger number of people, a new elevator stop is included, and the position of the stairs is modified in the last two sections. Likewise, a glass facade is included, allowing for the appreciation of the landscape without interrupting the prominence of the building.



View Point Gallery



*Blue lines shows other groups proposals